

TURNPIKE



Oil Pattern Distance: 41 Feet **Reverse Brush Drop:** 41 Feet **Oil Per Board:** 50 uL
Forward Oil Total: 11.1 mL **Reverse Oil Total:** 14.2 mL **Volume Oil Total:** 25.3 mL
Forward Boards Crossed: 222 Boards **Reverse Boards Crossed:** 284 Boards **Total Boards Crossed:** 506 Boards

	Start	Stop	Loads	Speed	Crossed	Start	End	Feet	T.Oil
1	2L	2R	6	18	222	0.0	12.7	12.7	11100
2	2L	2R	0	18	0	12.7	31.0	18.3	0
3	2L	2R	0	26	0	31.0	36.0	5.0	0
4	2L	2R	0	30	0	36.0	41.0	5.0	0

Forward Reverse More

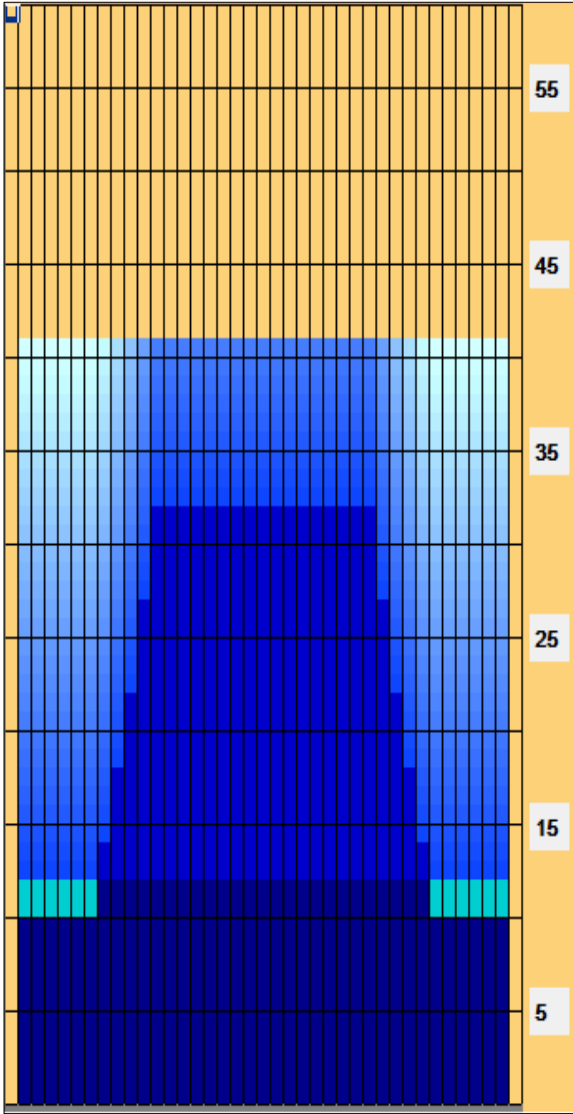
	Start	Stop	Loads	Speed	Crossed	Start	End	Feet	T.Oil
1	2L	2R	0	30	0	41.0	32.0	-9.0	0
2	12L	12R	2	18	34	32.0	26.9	-5.1	1700
3	11L	11R	2	18	38	26.9	21.8	-5.1	1900
4	10L	10R	2	14	42	21.8	17.9	-3.9	2100
5	9L	9R	2	14	46	17.9	14.0	-3.9	2300
6	8L	8R	2	14	50	14.0	10.1	-3.9	2500
7	2L	2R	2	14	74	10.1	6.2	-3.9	3700
8	2L	2R	0	10	0	6.2	0.0	-6.2	0

Forward Reverse More

Conditioner:
Type In or Select One

TransferType:
Type In or Select One

- Forward
- Reverse
- Combined
- Buff



Item Description	3L-7L:18L-18R Outside Track:Middle	8L-12L:18L-18R Middle Track:Middle	13L-17L:18L-18R Inside Track:Middle	18L-18R:17R-13R Middle: Inside Track	18L-18R:12R-8R Middle:Middle Track	18L-18R:7R-3R Middle:Outside Track
Track Zone Ratio	2.25	1.29	1	1	1.29	2.25

