

# Extraliga sk. D - Bowlingzone Pardubice



**Oil Pattern Distance:** 37 Feet      **Reverse Brush Drop:** 37 Feet      **Oil Per Board:** 50 uL  
**Forward Oil Total:** 12.35 mL      **Reverse Oil Total:** 11.05 mL      **Volume Oil Total:** 23.4 mL  
**Forward Boards Crossed:** 247 Boards      **Reverse Boards Crossed:** 221 Boards      **Total Boards Crossed:** 468 Boards

	Start	Stop	Loads	Speed	Crossed	Start	End	Feet	T.Oil
1	2L	2R	2	14	74	0.0	1.9	1.9	3700
2	5L	5R	1	14	31	1.9	3.8	1.9	1550
3	7L	7R	2	14	54	3.8	7.7	3.9	2700
4	9L	9R	3	18	69	7.7	15.3	7.6	3450
5	11L	11R	1	18	19	15.3	17.8	2.5	950
6	2L	2R	0	18	0	17.8	25.0	7.2	0
7	2L	2R	0	22	0	25.0	31.0	6.0	0
8	2L	2R	0	26	0	31.0	37.0	6.0	0

Conditioner: ICE

TransferType: Transfer Brush

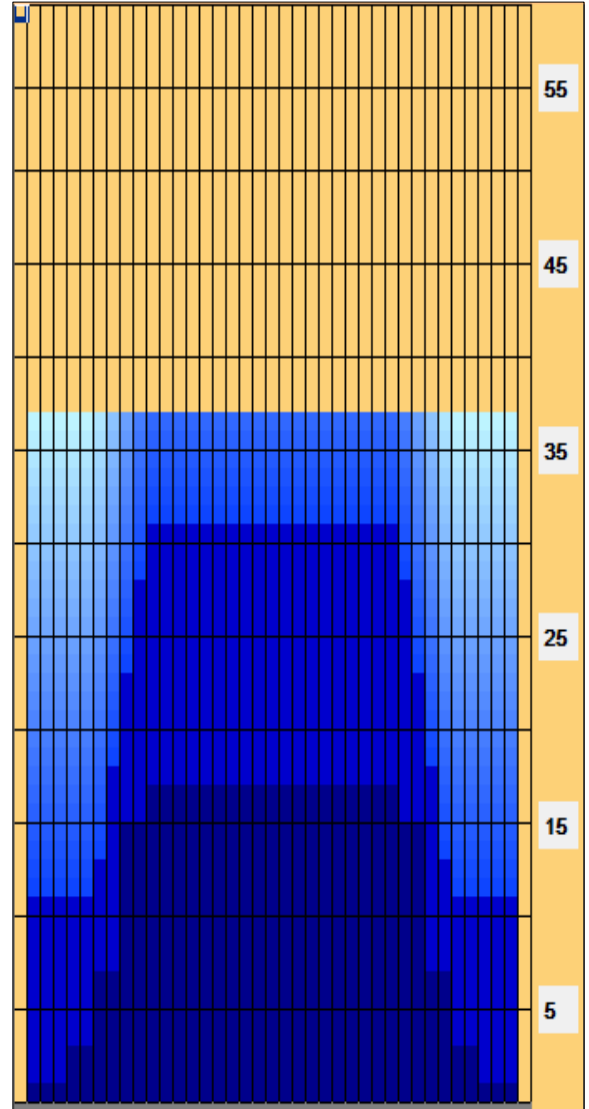
Forward

Reverse

Combined

Buff

	Start	Stop	Loads	Speed	Crossed	Start	End	Feet	T.Oil
1	2L	2R	0	30	0	37.0	31.0	-6.0	0
2	11L	11R	1	22	19	31.0	27.9	-3.1	950
3	10L	10R	2	18	42	27.9	22.8	-5.1	2100
4	9L	9R	2	18	46	22.8	17.7	-5.1	2300
5	8L	8R	2	18	50	17.7	12.6	-5.1	2500
6	7L	7R	1	14	27	12.6	10.7	-1.9	1350
7	2L	2R	1	14	37	10.7	8.8	-1.9	1850
8	2L	2R	0	14	0	8.8	0.0	-8.8	0



Item	3L-7L:18L-18R	8L-12L:18L-18R	13L-17L:18L-18R	18L-18R:17R-13R	18L-18R:12R-8R	18L-18R:7R-3R
Description	Outside Track:Middle	Middle Track:Middle	Inside Track:Middle	Middle: Inside Track	Middle:Middle Track	Middle:Outside Track
Track Zone Ratio	4.29	1.2	1	1	1.2	4.29

